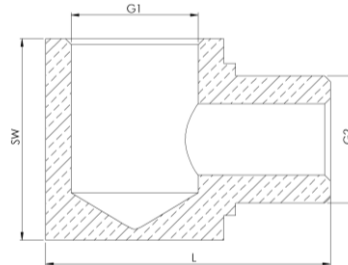




14.0950

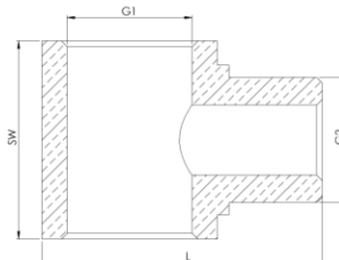


### Male L-distributor

Art. No.	Type No.	Female thread	Male thread	a/f mm	L mm
		G1	G2		
112578	14.0950	M5	M5	9	13.0
112579	14.0951	G 1/8	G 1/8	17	23.0
112580	14.0952	G 1/4	G 1/4	22	29.0
112581	14.0953	G 3/8	G 3/8	27	32.0



14.0942



### Male tee distributor

Art. No.	Type No.	Female thread	Male thread	a/f mm	L mm
		G1	G2		
112582	14.0940	M5	M5	10	14.0
112583	14.0941	G 1/8	G 1/8	17	23.0
112584	14.0942	G 1/4	G 1/4	22	29.0
112585	14.0943	G 3/8	G 3/8	27	32.0

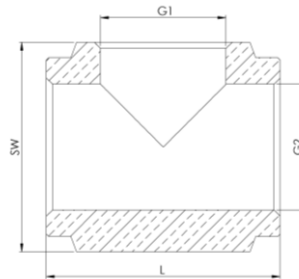
P 6-383\_e

## Distributors, in block shape

made of brass

Art. No. 112578 to 112581, Art. No. 112582 to 112585

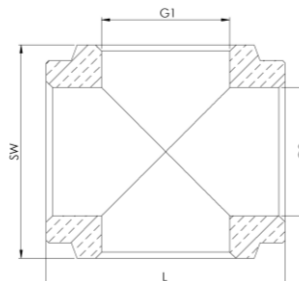
Art. No. 112586 to 112588, Art. No. 112591 to 112593



16.0962

### Tee distributor

Art. No.	Type No.	Female thread G1	Female thread G2	a/f mm	L mm
112586	16.0960	M5	M5	8	14.0
112587	16.0961	G 1/8	G 1/8	16	23.0
112588	16.0962	G 1/4	G 1/4	22	30.0



16.0972

### X-distributor

Art. No.	Type No.	Female thread G1	Female thread G2	a/f mm	L mm
112591	16.0970	M5	M5	8	14.0
112592	16.0971	G 1/8	G 1/8	16	23.0
112593	16.0972	G 1/4	G 1/4	22	30.0